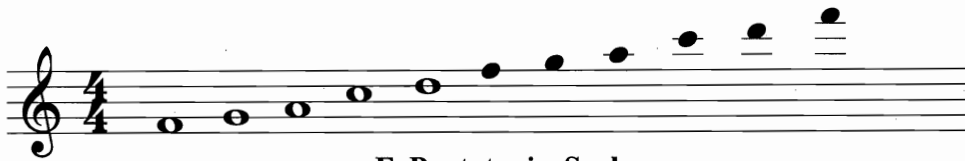


Pentatonic Etude #1

Flute

G.T.



F Pentatonic Scale

Intro

The main score consists of 10 staves of music in 4/4 time. The melody is primarily composed of eighth and quarter notes, often with slurs and ties. The chords are indicated below the staff lines. The sequence of chords across the staves is as follows:

- Staff 1: F, Am, Dm, C, B \flat
- Staff 2: Gm 7 , B \flat /C, F, B \flat /C
- Staff 3: F, Am, Dm, C, B \flat
- Staff 4: Gm 7 , B \flat /C, F
- Staff 5: B \flat , F/A, Gm 7 , B \flat /C, F
- Staff 6: B \flat , Am, Dm, C, B \flat
- Staff 7: F, Am, Dm, C, B \flat
- Staff 8: Gm 7 , B \flat /C, F

GP 001

Copyright 2006
georgespath.com

R-005