

Blues Etude #1

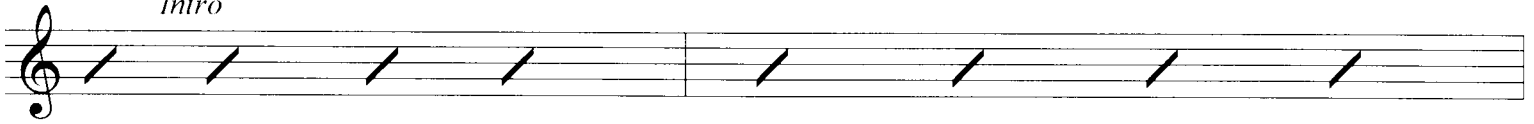
G.T.

Flute



C Blues Scale

Intro



C7

F7

C7



F7

C7



G7

F7

C7

G7



C7

F7

C7



F7

C7



G7

F7

C7

G7



GP 010

Copyright 2006
georgespath.com

Blues Etude #1

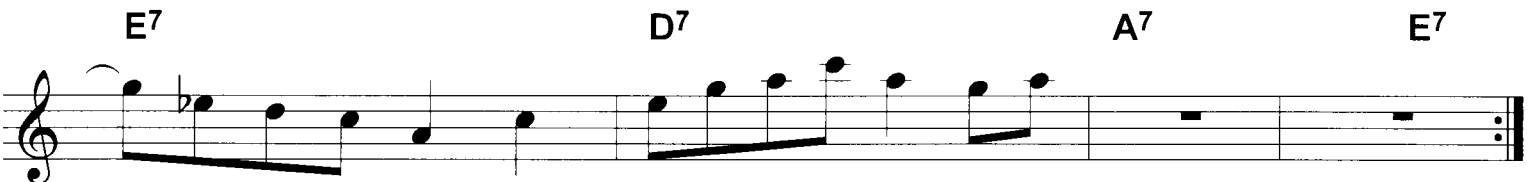
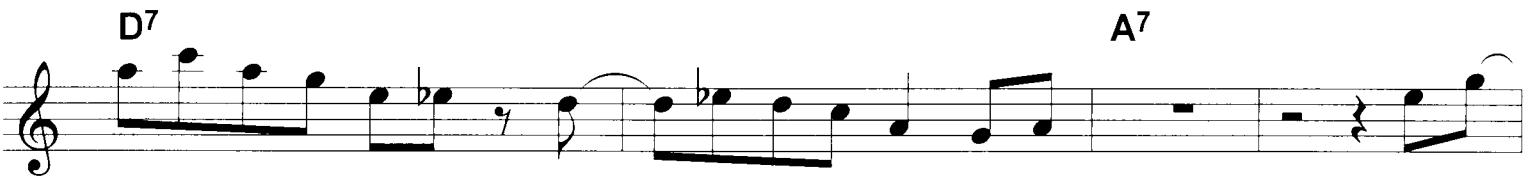
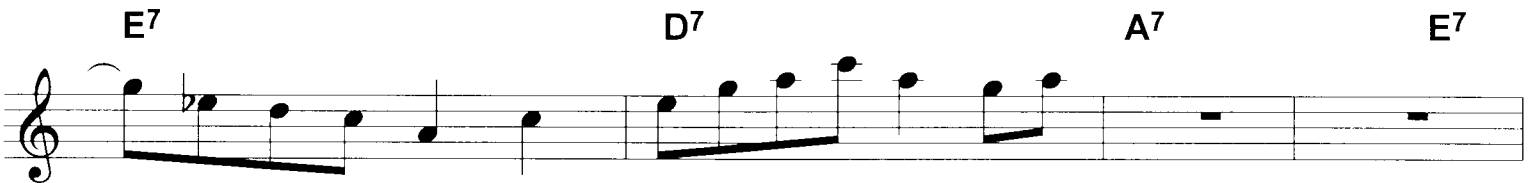
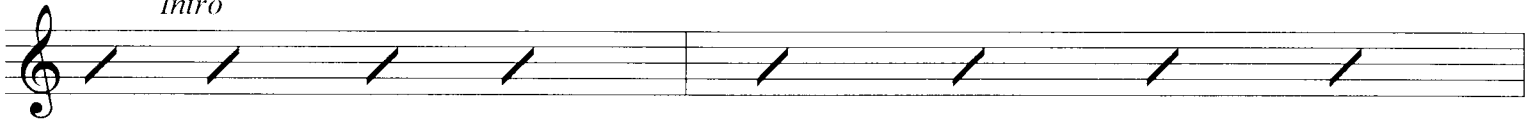
G.T.

E♭ Instruments



A Blues Scale

Intro



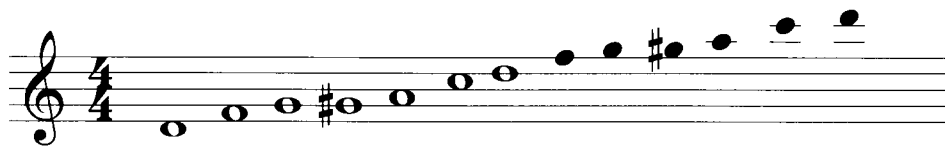
GP 010

Copyright 2006
georgespath.com

Blues Etude #1

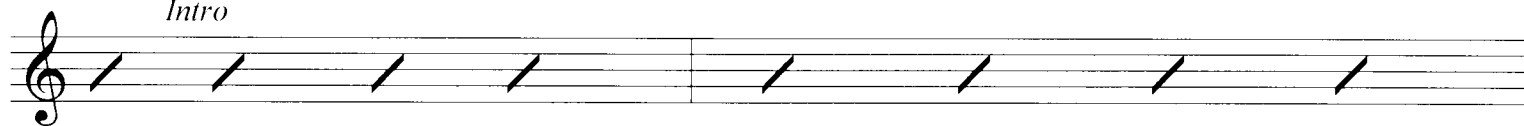
G.T.

Bb Instruments



D Blues Scale

Intro



D7

G7

D7



G7

D7



A7

G7

D7

A7



D7

G7

D7



G7

D7



A7

G7

D7

A7



GP 010

Copyright 2006
georgespath.com

Blues Etude #1

G.T.

C Instruments



C Blues Scale

Intro



C7

F7

C7



F7

C7



G7

F7

C7

G7



C7

F7

C7



F7

C7



G7

F7

C7

G7



GP 010

Copyright 2006
georgespath.com

Blues Etude #1

G.T.

Bass Clef Instruments

A single staff of music in bass clef, 4/4 time signature. The scale consists of the following notes: C, D, E, F, G, A, Bb, C. The notes are written as half notes, with a whole rest at the end.

C Blues Scale

Intro

A single staff of music in bass clef, 4/4 time signature. The staff contains seven diagonal slashes, indicating a rest for the entire duration of the piece.

First line of music in bass clef, 4/4 time signature. It begins with a repeat sign. The notes are: C, Bb, A, G, F, E, D, C. Chords C7, F7, and C7 are indicated above the staff.

Second line of music in bass clef, 4/4 time signature. The notes are: C, Bb, A, G, F, E, D, C. Chords F7 and C7 are indicated above the staff.

Third line of music in bass clef, 4/4 time signature. The notes are: G, F, E, D, C, Bb, A, G. Chords G7, F7, C7, and G7 are indicated above the staff.

Fourth line of music in bass clef, 4/4 time signature. The notes are: C, Bb, A, G, F, E, D, C. Chords C7, F7, and C7 are indicated above the staff.

Fifth line of music in bass clef, 4/4 time signature. The notes are: C, Bb, A, G, F, E, D, C. Chords F7 and C7 are indicated above the staff.

Sixth line of music in bass clef, 4/4 time signature. The notes are: G, F, E, D, C, Bb, A, G. Chords G7, F7, C7, and G7 are indicated above the staff. The piece ends with a double bar line.

GP 010

Copyright 2006
georgespath.com