

Example #1

Below is the basic "Bass Clef Instrument" version of Blues Etude #1. Bass players familiar with chord symbols will be able to use them to create a bass part.

For those unfamiliar with chord symbols, examples #2 and #3 that follow are samples of the written supplemental bass parts that we provide to get you started.

Blues Etude #1

Bass Clef Instruments

C Blues Scale

Intro

C7 F7 C7

F7 C7

G7 F7 C7 G7

C7 F7 C7

F7 C7

G7 F7 C7 G7

GP 010

Copyright 2006
georgespath.com

Example #2

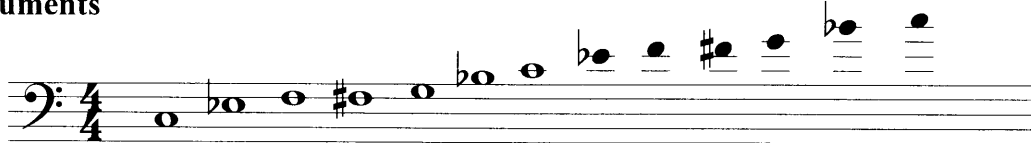
The following is a written supplemental bass part for Blues Etude #1. It is to be used by bass players who are unfamiliar with chord symbols. As you progress through the George's Path, you will learn the fundamentals of chord symbols which will help you create your own bass parts as well as improvise.

Subscribers will find these supplemental bass parts for *all* of the Part I Etudes on the "Subscriber Extras" page. Just scroll down to "New PDF's" and click on the "Bass Clef Instruments" link. Then click on the "Part I - Bass Supplemental" PDF and print.

Blues Etude #1

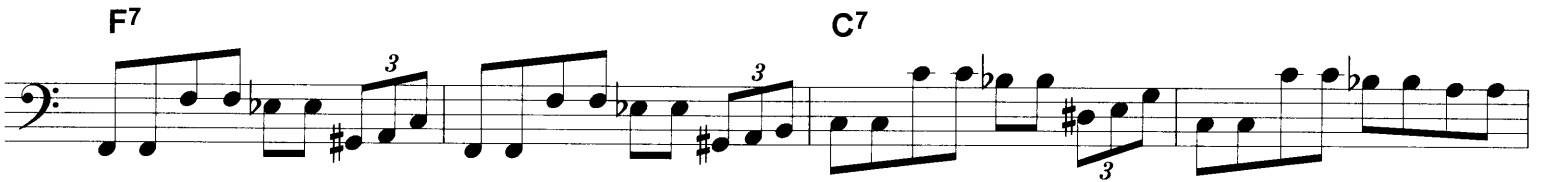
(Written Bass Part - Supplemental)

Bass Clef Instruments



Intro

C Blues Scale



Example #3

Below is a sample of the Rhythm Study #2 from Part II. The 16 measure study was written using the notes of the Cm7 scale. You can use the scale to improvise as well as create a bass part. If you are unfamiliar with creating your own bass parts, you may use the written supplemental at the bottom of the page to get started.

Rhythm Study #2

with Single Scale Improvisation

Bass Clef Instruments

Cm7

Cm7

Cm7

Cm7

(Improvise with scale trading 5, 7, 9 and 13 beat phrases.
Change phrase length with each repetition.)

Cm7

(Written Bass Supplemental: For Bass Players Only)

Example #4

The following is a page view of the *Practice Station Software* which shows where the GX Combo tracks end and the GZ Combo tracks (which are for bass players) begin. To download a Combo track just select your desired track and hit the “download” button above.

You can also play the Audio Lessons and Samples from this page

(Click on the “Software Guide” link on the *FAQ* or the *Purchase Details* pages of the website for complete instruction regarding the installation and features of the “Practice Station” software.)

The screenshot shows the 'Practice Station 1.1' software interface. At the top, there is a title bar with 'Practice Station 1.1' and several icons. Below the title bar, there is a menu bar with 'Practice Station', 'PDF Documents', and 'George's Path Web Site'. To the right of the menu bar is an 'Exit Practice Stati' button. Below the menu bar, there is a toolbar with 'Download', 'Play', and 'Refresh' buttons. To the right of the toolbar is a section titled 'Practice Station' with sub-sections 'MPS - Melody and Phrase Study', 'TBD - Track w/Background Only', and 'DRL - Drill'. Below the toolbar and menu bar, there is a table with four columns: 'Combo', 'Instruction', 'Samples', and 'Miscellaneous'. The 'Combo' column contains a list of tracks, each with a radio button. The track 'GZ001MPS' is selected, indicated by a filled radio button. An arrow points to this track from the text 'Here is where Bass Combo Tracks begin (GZ001MPS)'.

Combo	Instruction	Samples	Miscellaneous
<input type="radio"/> GX071DRL			
<input type="radio"/> GX071PS			
<input type="radio"/> GX071TBO			
<input type="radio"/> GX073DRL			
<input type="radio"/> GX073PS			
<input type="radio"/> GX073TBO			
<input checked="" type="radio"/> GZ001MPS			
<input type="radio"/> GZ001TBO			
<input type="radio"/> GZ002MPS			
<input type="radio"/> GZ002TBO			
<input type="radio"/> GZ003MPS			
<input type="radio"/> GZ003TBO			
<input type="radio"/> GZ004MPS			
<input type="radio"/> GZ004TBO			
<input type="radio"/> GZ005MPS			
<input type="radio"/> GZ005TBO			
<input type="radio"/> GZ006MPS			
<input type="radio"/> GZ006TBO			
<input type="radio"/> GZ007MPS			
<input type="radio"/> GZ007TBO			
<input type="radio"/> GZ008MPS			
<input type="radio"/> GZ008TBO			
<input type="radio"/> GZ009MPS			
<input type="radio"/> GZ009TBO			
<input type="radio"/> GZ010MPS			
<input type="radio"/> GZ010TBO			
<input type="radio"/> GZ011MPS			